

# Morgan O'Driscoll Photography



AUTUMN 2010



# SNUGPAK®

## OUTDOOR EQUIPMENT



Morgan O'Driscoll Photography has a superb studio nestled in the outskirts of Skipton;

Gateway to the Yorkshire Dales. We have all the facilities and equipment needed to fulfil any photography brief, whether out on location or here in the studio. Our editing suite is fresh and new with all the latest software and technology to deliver the highest quality results for our clients. Our team not only prides itself on top quality images but also our commitment to customer service. You will always be greeted with a smile and we work hard to ensure your experience runs smoothly and professionally (and with a few laughs here and there!) We are extremely proud of the quality of our work and the clients we are privileged to work with. Our new and exciting quarterly newsletter aims to give you a taste of our achievements and a sneaky peek behind the scenes. We hope you like it enough to share with friends and colleagues...enjoy.



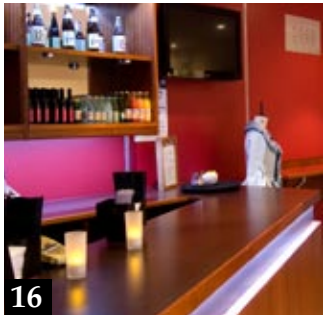
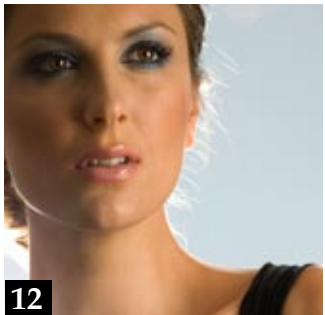
COVER SHOT:  
Dott. Sebastiano Rosa  
Tenuta San Guido, Tuscany.



Snugpak products shot outside our studio.



- 2 **SNUGPAK®**  
Outdoor equipment photographed on our doorstep!
- 4 **armit**  
Fine wines and producers on show.
- 8 **JN BENTLEY**  
Widdop Reservoir project photography.
- 12 **BADGEQUO**  
Model & product photography in the studio.
- 14 **BOWMAN RILEY ARCHITECTS**  
New HML HQ showcased.
- 16 **JONATHAN CAREY DESIGN**  
London & Yorkshire locations.
- 18 **NG BAILEY**  
Interior & exterior photography throughout the UK.



- 20 **TN COOK LTD**  
AGA & Everhot ranges in the studio.
- 22 **TB RAMSDEN**  
Location fashion shoot at Yorkshire Lavender Farm.







armit

FINE WINE MERCHANT



Opposite - Selection of wine supplied by **armit**, photographed at studio.  
This page - On location at Château Margaux.





Dott. Sebastiano Rosa, Tenuta San Guido, photographed on location, Tuscany.



# JN BENTLEY

## CIVIL ENGINEERING



Widdop Reservoir.  
Installation of drainage and  
erosion protection to the embankment.



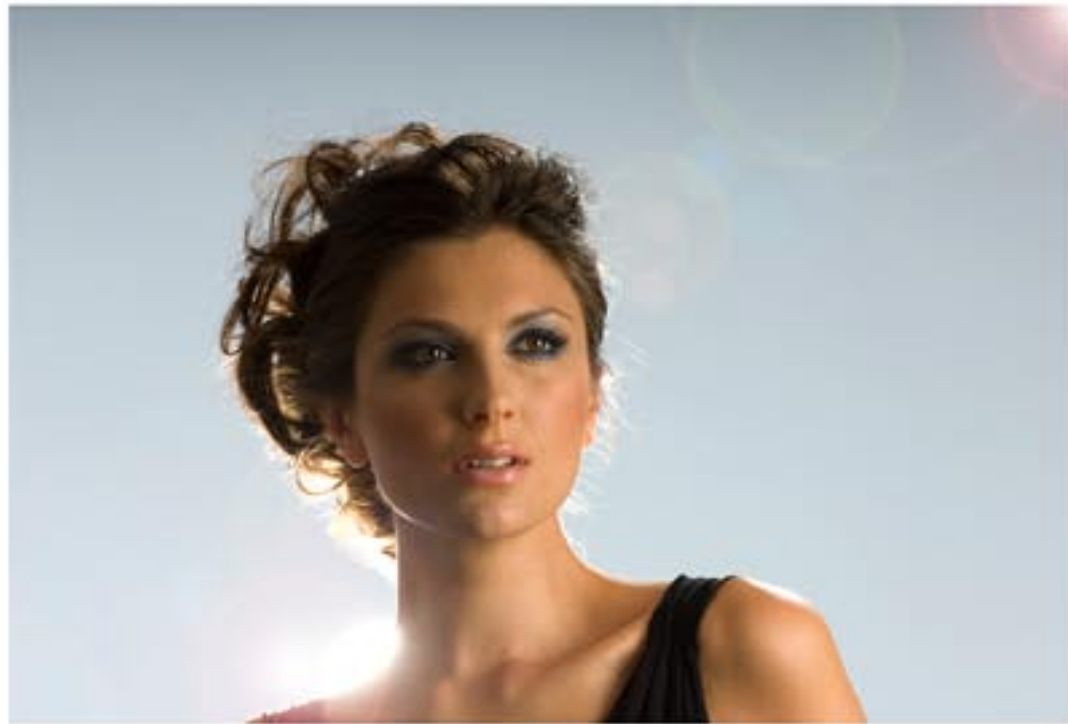
# JN BENTLEY

CIVIL  
ENGINEERING



Widdop Reservoir.  
Further images from the days shoot.





# BADGEQUO

## COSMETICS

Model and product photography  
shot at studio for company literature.





# BOWMAN RILEY

## ARCHITECTS

New HML Headquarters, Skipton.

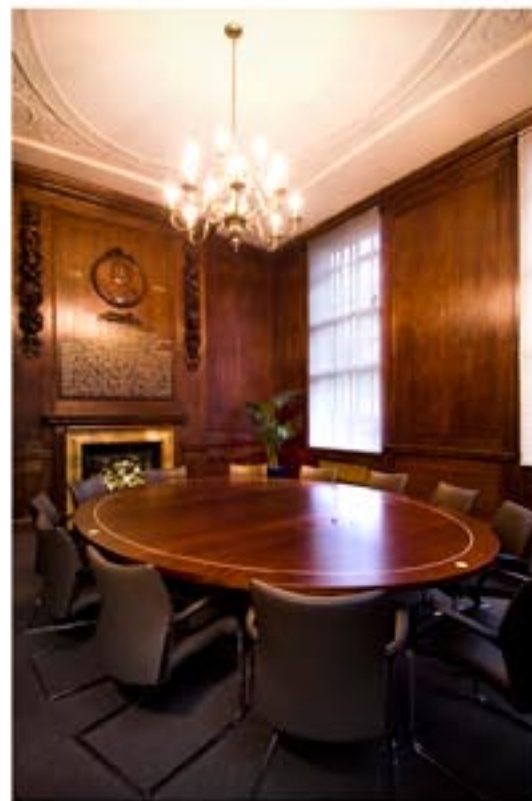


# JONATHAN CAREY DESIGN

BESPOKE FURNITURE



Harrogate Theatre, bar interior.



Royal College of Nursing  
Cavendish Square, London.



Addingham Health Centre, reception interior.



# NG BAILEY

UK'S LARGEST BUILDING  
SERVICES PROVIDER



Commercial development  
London.



Office project  
London.



School development  
Redcar.



Luxury apartments  
London.

Quayside development  
Newcastle.



Lighting installation  
Gateshead.



Prestigious development in the heart of Leeds.



# TN COOK LTD

AGA & EVERHOT



AGA and Everhot products shot in the studio.



## Behind the scenes...

*The Shoot:  
On location for TB  
Ramsden, creators  
of fashion hand knit  
patterns and yarns.*



*We love working  
on location! It  
brings with it  
a new challenge  
compared with the  
more controlled  
environment of a  
studio.*

*We can express a  
different level of  
creativity for our  
clients products.*



*Photographers:  
Morgan O'Driscoll &  
Laura Grace*



*And of course, in the UK we  
are never without the challenge  
of the ever-changing elements!*

*Location: Yorkshire Lavender  
Farm, Terrington. Stunning  
background of 60 acres of  
beautiful hillside farmland.*





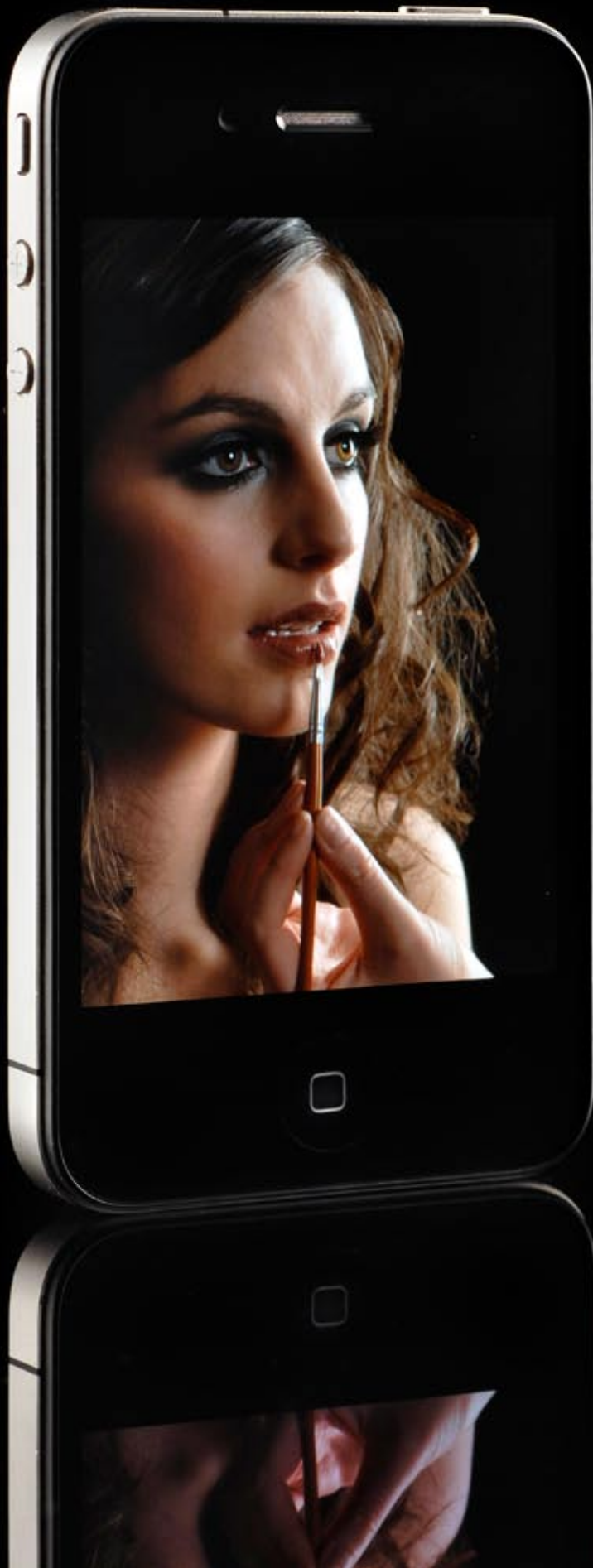
# TB RAMSDEN

DESIGN COLLECTION





GREAT PHOTOGRAPHY SELLS PRODUCT



T: 01756 709990